



FILTER TECHNOLOGY

# SEGRE N31000

## FULLY ADJUSTABLE N99 RESPIRATOR

THE SEGRE N31000 IS A COMFORTABLE AND DURABLE N99 MASK, WITH ADJUSTABLE NOSE CLIP AND STRAPS FOR A SUPERIOR FIT.

### ORDERING INFORMATION:

PART NUMBER: N31000

PACKAGING: INDIVIDUALLY WRAPPED  
15 PER BOX, 10 BOXES PER CASE



# PROTECTS

FILTRATION FOR PARTICULATES > 99%

BACTERIAL FILTRATION EFFICIENCY  
(BFE) > 99,9%

FLUID RESISTANT



FILTER TECHNOLOGY

## **SEGRE N31000** FULLY ADJUSTABLE N99 RESPIRATOR

**GVS N99 NIOSH CERTIFIED TC-84A-9111**

**CONFORMS TO US FDA GMP regulations 21 CFR Parts 210, 211 and 820.**

### **WHAT DOES THIS MEAN?**

THERE ARE TWO MAIN CLASSES OF FILTERING FACEPIECES - N95 & N99. THE SEGRE N31000 SITS IN ONE OF THE HIGHEST CLASSIFICATION FOR A MASK - N99. IN ORDER TO ACHIEVE THIS CLASSIFICATION, TESTS ARE PERFORMED ON THE MASK TO MEASURE IT'S FILTERING EFFICIENCY AND THE MAXIMUM LEVEL OF INWARD LEAKAGE. THE MASK IS ALSO SUBJECTED TO BREATHING RESISTANCE AND SKIN COMPATIBILITY TESTS. ALL SEGRE MASKS ARE NIOSH APPROVED.

### **FEATURES AND BENEFITS OF N31000**

- ◆ FILTER EFFICIENCY EXCEEDS 99% & BFE 99,9%
- ◆ FOLDFLAT DESIGN - SLEAK AND COMFORTABLE
- ◆ ADJUSTABLE STRAP - UNRIVALLED ADJUSTABILITY
- ◆ PADDED NOSE SUPPORT FOR INCREASED COMFORT
- ◆ ALUMINUM NOSE PIECE (MRI SAFE)
- ◆ UNVALVED - PROTECTS YOU AND THOSE AROUND YOU
- ◆ INDIVIDUALLY WRAPPED TO AVOID CROSS CONTAMINATION
- ◆ FLUID RESISTANT
- ◆ LATEX FREE
- ◆ MECHANICAL PTFE MEMBRANE FILTER
- ◆ ELECTROSTATIC PRE-FILTER



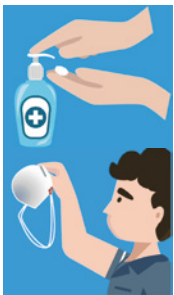
ALL SEGRE MASKS ARE NIOSH APPROVED



FILTER TECHNOLOGY

**SEGRE N31000**  
FULLY ADJUSTABLE  
N99 RESPIRATOR

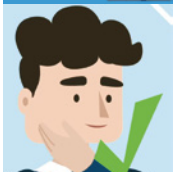
## IMPORTANT INFORMATION



Sanitise your hands before handling a mask



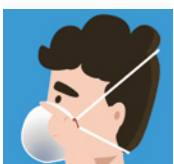
Always check the mask for defects before donning



Ensure you are clean shaven when wearing a mask



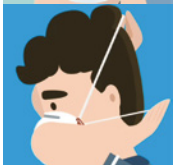
Adjust the straps evenly by twisting the elastic around the clips on both sides



Press the metal clip smoothly across the bridge of the nose to achieve a good fit, and to remove possible leaks



Pressure check the seal by pressing the mask to your face, and exhaling - air should not escape anywhere around the mask



When doffing the mask, only use the straps and don't touch the body of the mask

VISIT [WWW.GVS.COM/MAG/ENG](http://WWW.GVS.COM/MAG/ENG) FOR MORE INFORMATION